

Condensate Filter Element

Long service life High dirt holding capacity Deep filtration

// The user can customize according to the actual working conditions //

- Pharmaceutical industry
- Food industry
- Electronic industry
- Petroleum and chemical industry



Applications	Pharmaceutical industry, food industry, electronic industry, petroleum and chemical industry, etc.
Filtration media	water suspension, particulate matter, water dirt, bacteria and algae, rust, etc.

Leave a message

Name

Email

Tel

Others...

SEND NOW

Need any help?

You can contact us in the following ways



overseas@oxfilter.com



008613069352523

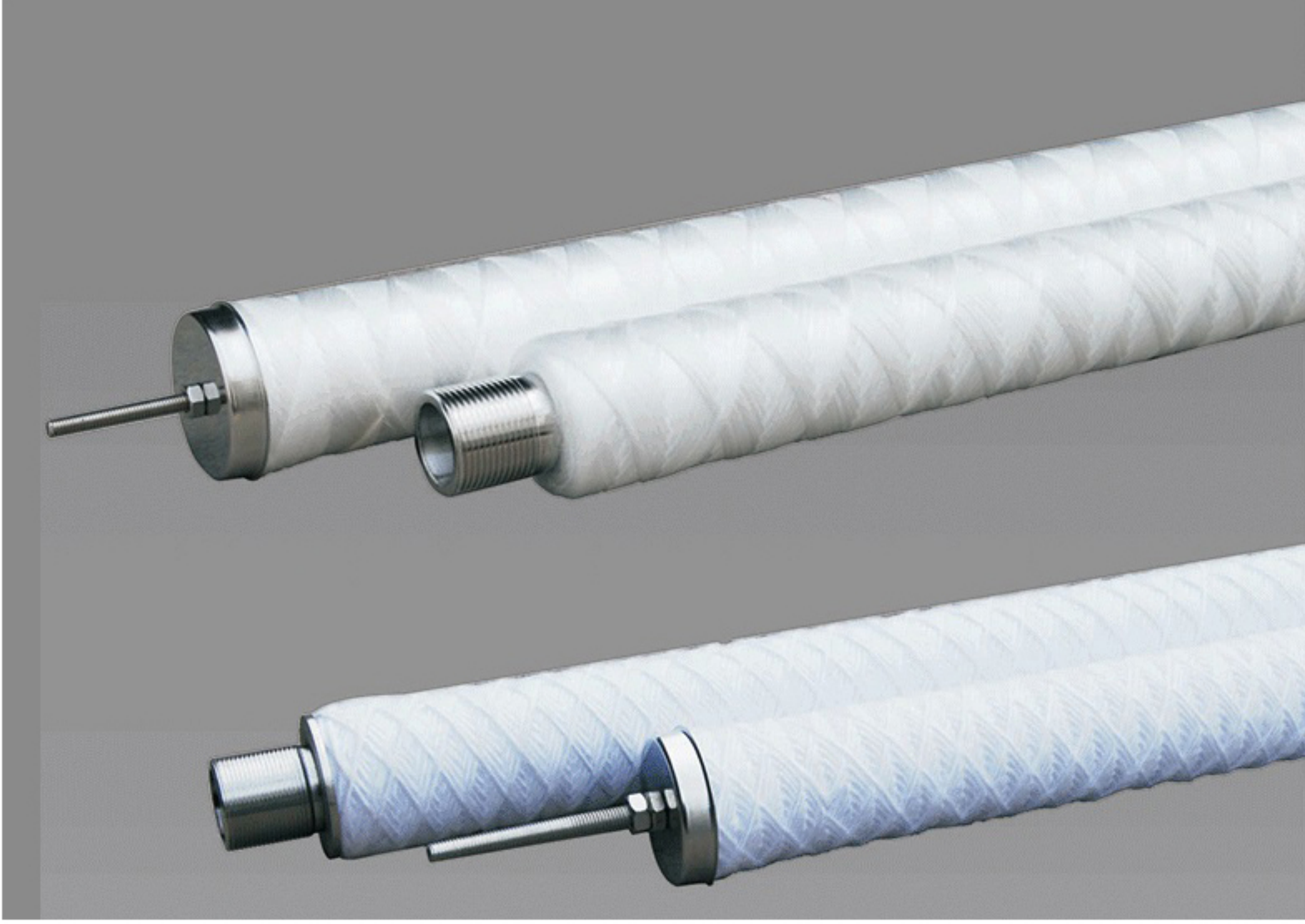
Chat Now

Working Principle

A certain number of filter elements are installed inside the filter. Water enters from the outside of each element and flows out through a porous tube in the centre of the element, with impurities being trapped on the surface of the element. There are two main forms of filter elements, winding filter elements when the membrane is laid and folding filter elements when the membrane is not laid. The folded filter element has a precision of 10µm at start-up and a precision of 2µm or 5µm during normal operation.



Different sizes of condensate filter elements



Product Advantages

Precision

High filtration precision:
Over 90% retention rate relative to filtration accuracy.Wide range of filtration precision to meet various application requirements,Good dirt retention,Long service life



With internal thread construction,Enhanced pressure resistance



Using polypropylene composite filter membrane



Sparse outside, dense inside, honeycomb structure

Technical parameters

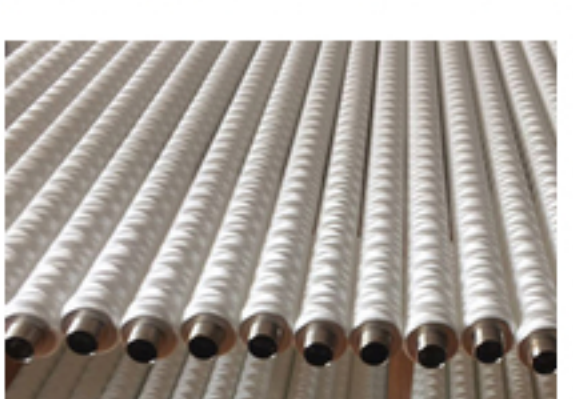
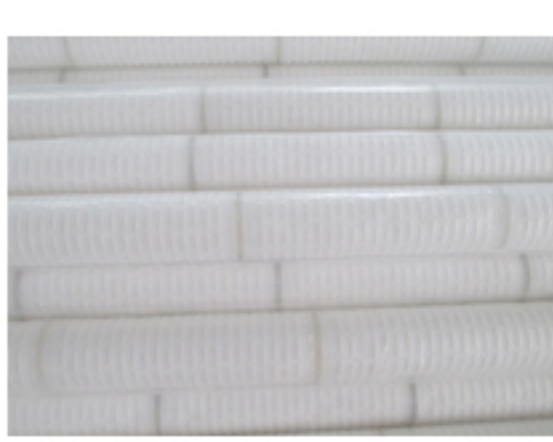
Name: condensate filter element	Filter material: polypropylene fiber, skimmed cotton thread, glass fiber thread
Filter element outer diameter: Φ50, Φ60mm	Inner diameter of cartridge: Φ25, Φ28mm
Cartridge length: 70"/1778mm, 60"/1524mm	Central skeleton: stainless steel 304 / 316
Filtration precision: Maximum operating temperature: 85°C	Connection method: thread
Design flow rate: 2.9m3/h~3.2m3/h	Top structure: M6, M8, M10 thread
Bottom structure: connection thread M33×1.5, M33×2, G1, 1 3/16" -24 BSW connection	

Can be customized according to different working conditions

CATALOG

VIDEO

Product Details



Customer Cases



Circulating water treatment site of a coal chemical enterprise in Shanxi

Use: Cartridge filter element
Flow rate: 200h



Shandong an environmental company use site

Use: Circulating water treatment
Flow rate: 200h



Henan a water treatment company after use

Use: Cartridge filter circulating water treatment
Flow rate: 200m3/h

RELATED PRODUCTS



Meltblown Filter Element



Pleated Filter Element



Wire Wound Filter Element



Enter Your Email for an Instant 5% OFF Your First Order

Name Email Tel

Others...

SEND NOW

SOCIAL MEDIA



PRODUCTS

Oil Filtration Service
Water Filtration Solutions
Air Filtration Technology
More models

SUPPORT

BLOG
CASE
FAQ

CONTACT US

Email: overseas@oxfilter.com
Mobile: 0086-13069352523
Factory Address: Filter Industrial Park, High-Tech Industrial Development Zone, Xinxiang City, Henan P.R. China. (Post code: 453000)